

Mouse Cathepsin E/CTSE (His Tag) recombinant protein



Catalog Number: 502145

General Information

Protein Construction

A DNA sequence encoding the extracellular domain of mouse CTSE (NP_031825.2) (Met 1-Pro 397) was expressed, with a polyhistidine tag at the C-terminus.

Organism

Mouse

Expression Host

Human Cells

QC Testing

Purity

> 97 % as determined by SDS-PAGE

Endotoxin

< 1.0 EU per μg of the protein as determined by the LAL method

Stability

Samples are stable for up to twelve months from date of receipt at -70°C

Predicted N terminal

Gln 19

Molecular Mass

The secreted recombinant mouse CTSE (pro form) consists of 390 amino acids and has a predicted molecular mass of 42.4 kDa. In SDS-PAGE under

reducing conditions, the apparent molecular mass of rmCTSE is approximately 45-48 kDa due to glycosylation.

Formulation

Lyophilized from sterile PBS, pH 7.4

1. 5 % trehalose and mannitol are added as protectants before lyophilization.

2. Please contact us for any concerns or special requirements.

Usage Guide

Storage

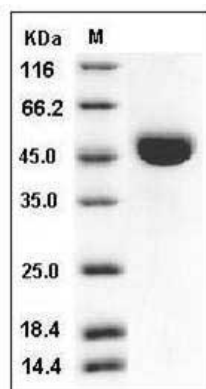
Store it under sterile conditions at -20°C to -80°C .

It is recommended that the protein be aliquoted for optimal storage. Avoid repeated freeze-thaw cycles.

Reconstitution

Adding sterile water, prepare a stock solution of 0.25 mg/ml. Concentration is measured by UV-Vis.

SDS-PAGE



Mouse Cathepsin E / CTSE Protein (His Tag) SDS-PAGE