

# Human Ephrin-B2 (His & Fc Tag) recombinant protein



Catalog Number: 502066

## General Information

### Gene Name Synonym:

EPH-related receptor tyrosine kinase ligand 5;  
HTK ligand

### Protein Construction:

A DNA sequence encoding the human EFNB2 (NP\_004084.1) extracellular domain (Met 1-Ala 229) was fused with the C-terminal polyhistidine-tagged Fc region of human IgG1 at the C-terminus.

**Source:** Human

**Expression Host:** Human Cells

## QC Testing

### Activity:

Measured by its binding ability in a functional ELISA. Immobilized human EphB4-his at 2 µg/ml (100 µl/well) can bind human EphrinB2 Fc chimera with a linear range of 1-25 ng/ml. Immobilized human EphB4 at 2 µg/ml (100 µl/well) can bind human EphrinB2 Fc chimera with a linear range of 1-125 ng/ml.

### Purity:

> 97 % as determined by SDS-PAGE

### Endotoxin:

< 1.0 EU per µg of the protein as determined by the LAL method

### Stability:

Samples are stable for up to twelve months from date of receipt at -70°C

### Predicted N terminal:

Ile 28

### Molecular Mass:

The recombinant human EFNB2/Fc chimera is a disulfide-linked homodimeric protein. The reduced monomer consists of 450 amino acids and predicts a molecular mass of 50.3 kDa. In SDS-PAGE under reducing conditions, the apparent molecular mass of rh EFNB2/Fc monomer is approximately 62 kDa due to glycosylation.

### Formulation:

Lyophilized from sterile PBS, pH 7.4

1. 5 % trehalose and mannitol are added as protectants before lyophilization.

2. Please contact us for any concerns or special requirements.

## Usage Guide

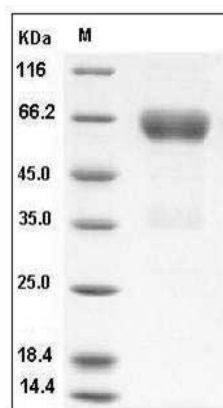
### Storage:

Store it under sterile conditions at -20°C to -80°C. It is recommended that the protein be aliquoted for optimal storage. Avoid repeated freeze-thaw cycles.

### Reconstitution:

Adding sterile water, prepare a stock solution of 0.25 mg/ml. Concentration is measured by UV-Vis.

### SDS-PAGE:



Human Ephrin-B2 / EFNB2 Protein (His & Fc Tag)  
SDS-PAGE