

# Human KSP-Cadherin/Cadherin-16 (His Tag) recombinant protein



Catalog Number: 502065

## General Information

### Gene Name Synonym

Kidney-specific cadherin

### Protein Construction

A DNA sequence encoding the extracellular domain of human CDH16 (NP\_004053.1) (Met 1-Ala 786) was expressed, fused with a polyhistidine tag at the C-terminus.

### Organism

Human

### Expression Host

Human Cells

## QC Testing

### Activity

Measured by the ability of the immobilized protein to support the adhesion of MCF-7 human breast adenocarcinoma cells.

When cells are added to CDH16-His coated plates (10 µg/mL, 100 µL/well), approximately 20-40% will adhere specifically after 60 minutes at 37 °C.

### Purity

> 70 % as determined by SDS-PAGE

### Endotoxin

< 1.0 EU per µg of the protein as determined by the LAL method

### Stability

Samples are stable for up to twelve months from date of receipt at -70°C

### Predicted N terminal

Lys 19

### Molecular Mass

The recombinant human CDH16 comprises 779 amino acids and has a calculated molecular mass of 84.8 kDa. As a result of glycosylation, the recombinant protein migrates as an approximately 100 kDa protein in SDS-PAGE under reducing conditions.

### Formulation

Lyophilized from sterile PBS, pH 7.4

1. 5 % trehalose and mannitol are added as protectants before lyophilization.

2. Please contact us for any concerns or special requirements.

## Usage Guide

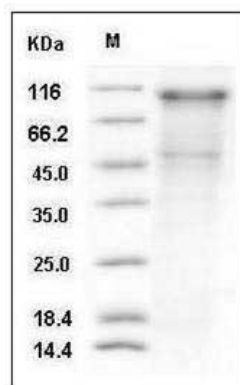
### Storage

Store it under sterile conditions at -20°C to -80°C. It is recommended that the protein be aliquoted for optimal storage. Avoid repeated freeze-thaw cycles.

### Reconstitution

Adding sterile water, prepare a stock solution of 0.25 mg/ml. Concentration is measured by UV-Vis.

### SDS-PAGE



Human KSP-Cadherin / Cadherin-16 / CDH16  
Protein (His Tag) SDS-PAGE