

# Human CADM3/NECL1/IGSF4B (His Tag) recombinant protein



Catalog Number: 502049

## General Information

### Gene Name Synonym

Brain immunoglobulin receptor; Immunoglobulin superfamily member 4B; Nectin-like protein 1; Synaptic cell adhesion molecule 3; TSLC1-like protein 1

### Protein Construction

A DNA sequence encoding the human CADM3 isoform 2 (short isoform) (NP\_001120645.1) extracellular domain (Met 1-His 330) was expressed, with a polyhistidine tag at the C-terminus.

### Organism

Human

### Expression Host

Human Cells

## QC Testing

### Activity

Measured by the ability of the immobilized protein to support the adhesion of C6 Rat brain glial cells. Human CADM3 immobilized at 0.8 µg/ml, 100 µl/well will mediate >30% C6 cell adhesion.

### Purity

> 95 % as determined by SDS-PAGE

### Endotoxin

< 1.0 EU per µg of the protein as determined by the LAL method

### Stability

Samples are stable for up to twelve months from date of receipt at -70°C

### Predicted N terminal

Asn 25

### Molecular Mass

The recombinant human CADM3 consists of 317 amino acids and predicts a molecular mass of 35.1 kDa. In SDS-PAGE under reducing conditions, the apparent molecular mass of rh CADM3 is approximately 39-41 kDa due to glycosylation.

### Formulation

Lyophilized from sterile PBS, pH 7.4  
1. 5 % trehalose and mannitol are added as protectants before lyophilization.  
2. Please contact us for any concerns or special requirements.

## Usage Guide

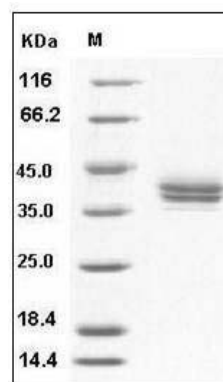
### Storage

Store it under sterile conditions at -20°C to -80°C. It is recommended that the protein be aliquoted for optimal storage. Avoid repeated freeze-thaw cycles.

### Reconstitution

Adding sterile water, prepare a stock solution of 0.25 mg/ml. Concentration is measured by UV-Vis.

### SDS-PAGE



Human CADM3 / NECL1 / IGSF4B Protein (His Tag) SDS-PAGE