

## General Information

### Protein Construction

A DNA sequence encoding the secreted form of mouse NAALADL1 (Q7M758) (Pro 29-Leu 745) was fused with a polyhistidine tag at the N-terminus.

### Organism

Mouse

### Expression Host

Human Cells

## QC Testing

### Purity

> 97 % as determined by SDS-PAGE

### Endotoxin

< 1.0 EU per  $\mu\text{g}$  of the protein as determined by the LAL method

### Stability

Samples are stable for up to twelve months from date of receipt at  $-70^{\circ}\text{C}$

### Predicted N terminal

His

### Molecular Mass

The secreted recombinant mouse NAALADL1 comprises 736 amino acids and predicts a molecular mass of 80 kDa. As a result of

glycosylation, the apparent molecular mass of mouse NAALADL1 is approximately 110 kDa in SDS-PAGE under reducing conditions.

### Formulation

Lyophilized from sterile PBS, pH 7.4

1. 5 % trehalose and mannitol are added as protectants before lyophilization.

2. Please contact us for any concerns or special requirements.

## Usage Guide

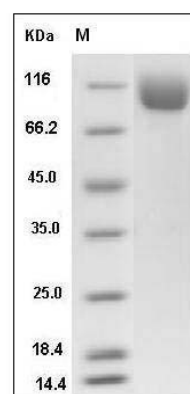
### Storage

Store it under sterile conditions at  $-20^{\circ}\text{C}$  to  $-80^{\circ}\text{C}$ . It is recommended that the protein be aliquoted for optimal storage. Avoid repeated freeze-thaw cycles.

### Reconstitution

Adding sterile water, prepare a stock solution of 0.25 mg/ml. Concentration is measured by UV-Vis.

## SDS-PAGE



Mouse NAALADL1 Protein (His Tag) SDS-PAGE