

Canine IL-1 beta recombinant protein



Catalog Number: 502015

General Information

Protein Construction

A DNA sequence encoding the mature form of canine IL1B (Q28292) (Ala 115-Ser 266) was expressed, with an initial Met at the N-terminus.

Organism

Canine

Expression Host

E. coli

QC Testing

Activity

1. Measured by its ability to bind human IL1R1 in a functional ELISA.
2. Measured in a cell proliferation assay using D10.G4.1 mouse helper T cells. The ED₅₀ for this effect is typically 2-12 pg/mL.

Purity

> 96 % as determined by SDS-PAGE

Endotoxin

Please contact us for more information.

Stability

Samples are stable for up to twelve months from date of receipt at -70°C

Predicted N terminal

Met

Molecular Mass

The recombinant canine IL1B consists of 153 amino acids and has a calculated molecular mass of 17.6 kDa. In SDS-PAGE under reducing conditions, it migrates as an approximately 17 kDa band.

Formulation

Lyophilized from sterile 20mM PB, 0.3M NaCl, pH 6.5

1. 5 % trehalose and mannitol are added as protectants before lyophilization.

2. Please contact us for any concerns or special requirements.

Usage Guide

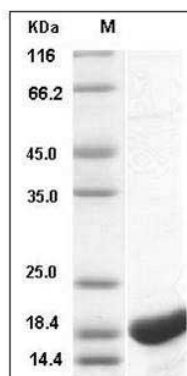
Storage

Store it under sterile conditions at -20°C to -80°C. It is recommended that the protein be aliquoted for optimal storage. Avoid repeated freeze-thaw cycles.

Reconstitution

Adding sterile water, prepare a stock solution of 0.25 mg/ml. Concentration is measured by UV-Vis.

SDS-PAGE



Canine IL-1 beta / IL1B Protein SDS-PAGE