

Human Contactin 3/CNTN3 (708 Asp/Asn, His Tag) recombinant protein



Catalog Number: 502013

General Information

Gene Name Synonym

Brain-derived immunoglobulin superfamily protein 1; Plasmacytoma-associated neuronal glycoprotein

Protein Construction

A DNA sequence encoding the human CNTN3 (NP_065923.1) (Met 1-Ser1002, 708 Asp/Asn) precursor was expressed with a C-terminal polyhistidine tag.

Organism

Human

Expression Host

Human Cells

QC Testing

Activity

Measured by the ability of the immobilized protein to support the adhesion of C6 Rat brain glial cells. When 5×10^4 cells/well are added to CNTN3 coated plates (0.8 $\mu\text{g/ml}$ and 100 $\mu\text{l/well}$), approximately 35%-55% will adhere specifically after 60 minutes at 37°C.

Purity

> 97 % as determined by SDS-PAGE

Endotoxin

< 1.0 EU per μg of the protein as determined by the LAL method

Stability

Samples are stable for up to twelve months from date of receipt at -70°C

Predicted N terminal

Glu 20

Molecular Mass

The recombinant human CNTN3 consists of 994 amino acids and has a calculated molecular mass of 109.2 kDa. By SDS-PAGE under reducing conditions, the apparent molecular mass of rh CNTN3 is approximately 120-130 kDa due to glycosylation.

Formulation

Lyophilized from sterile PBS, pH 7.4

1. 5 % trehalose and mannitol are added as protectants before lyophilization.

2. Please contact us for any concerns or special requirements.

Usage Guide

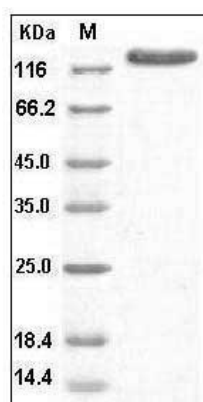
Storage

Store it under sterile conditions at -20°C to -80°C. It is recommended that the protein be aliquoted for optimal storage. Avoid repeated freeze-thaw cycles.

Reconstitution

Adding sterile water, prepare a stock solution of 0.25 mg/ml . Concentration is measured by UV-Vis.

SDS-PAGE



Human Contactin 3 / CNTN3 Protein (708 Asp/Asn, His Tag) SDS-PAGE