

# Rat SELP / P Selectin (His Tag) recombinant protein



Catalog Number: 501937

## General Information

### Protein Construction

A DNA sequence encoding the rat SELP (AAI01920.1) (Met1-Gln700) was expressed with a polyhistidine tag at the C-terminus.

### Organism

Rat

### Expression Host

Human Cells

## QC Testing

### Purity

> 95 % as determined by SDS-PAGE

### Endotoxin

< 1.0 EU per  $\mu$ g of the protein as determined by the LAL method

### Stability

Samples are stable for up to twelve months from date of receipt at -70°C

### Predicted N terminal

Trp 42

### Molecular Mass

The recombinant rat SELP comprises 670 amino acids and predicts a molecular mass of 73.4 kDa. The apparent molecular mass of the recombinant

protein is approximately 114 kDa in SDS-PAGE under reducing conditions.

### Formulation

Lyophilized from sterile PBS, pH 7.4.

1. 5 % trehalose and mannitol are added as protectants before lyophilization.

2. Please contact us for any concerns or special requirements.

## Usage Guide

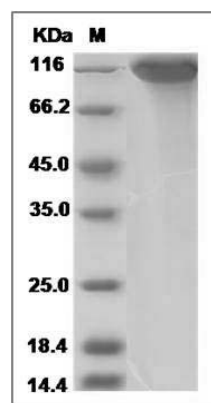
### Storage

Store it under sterile conditions at -20°C to -80°C. It is recommended that the protein be aliquoted for optimal storage. Avoid repeated freeze-thaw cycles.

### Reconstitution

Adding sterile water, prepare a stock solution of 0.25 mg/ml. Concentration is measured by UV-Vis.

### SDS-PAGE



Rat SELP / selectin P / P-selectin Protein (His Tag)  
SDS-PAGE