

Human Selenoprotein M (His Tag)



Catalog Number: 501933

General Information

Protein Construction

A DNA sequence encoding the mature form of human SELM (Q8WWX9) (Ala 24-Leu 145) was fused with a polyhistidine tag at the C-terminus and an initial Met at the N-terminus.

Organism

Human

Expression Host

E. coli

QC Testing

Purity

> 97 % as determined by SDS-PAGE

Endotoxin

Please contact us for more information.

Stability

Samples are stable for up to twelve months from date of receipt at -70°C

Predicted N terminal

Met

Molecular Mass

The recombinant human SELM comprises 133 amino acids and has a calculated molecular mass of 15.4KDa. It migrates as an approximately 19 kDa band in SDS-PAGE under reducing

conditions.

Formulation

Lyophilized from sterile 50mM Tris, 50mM NaCl, 50mM Arg, 0.3% Tween 20, 5% glycerol, pH 8.5
1. 5 % trehalose and mannitol are added as protectants before lyophilization.
2. Please contact us for any concerns or special requirements.

Usage Guide

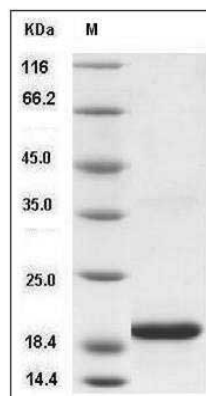
Storage

Store it under sterile conditions at -20°C to -80°C. It is recommended that the protein be aliquoted for optimal storage. Avoid repeated freeze-thaw cycles.

Reconstitution

Adding sterile water, prepare a stock solution of 0.25 mg/ml. Concentration is measured by UV-Vis.

SDS-PAGE



Human SELM / Selenoprotein M Protein (His Tag) SDS-PAGE