

# Mouse Endothelial Cell Adhesion Molecule (His Tag) recombinant protein



Catalog Number: 501920

## General Information

### Protein Construction

A DNA sequence encoding the mouse ESAM (Q925F2) (Met 1-Ala 251) was expressed, with a C-terminal polyhistidine tag.

### Organism

Mouse

### Expression Host

Human Cells

## QC Testing

### Purity

> 92 % as determined by SDS-PAGE

### Endotoxin

< 1.0 EU per  $\mu$ g of the protein as determined by the LAL method

### Stability

Samples are stable for up to twelve months from date of receipt at -70°C

### Predicted N terminal

Gln 30

### Molecular Mass

The secreted recombinant mouse ESAM comprises 233 amino acids and has a calculated molecular mass of 25.6 kDa. As a result of different glycosylation, the apparent molecular mass of the

recombinant protein is approximately 33-43 kDa in SDS-PAGE under reducing conditions.

### Formulation

Lyophilized from sterile PBS, pH 7.4

1. 5 % trehalose and mannitol are added as protectants before lyophilization.

2. Please contact us for any concerns or special requirements.

## Usage Guide

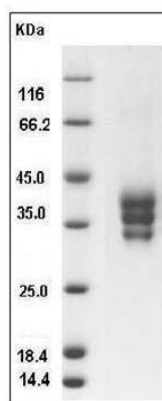
### Storage

Store it under sterile conditions at -20°C to -80°C. It is recommended that the protein be aliquoted for optimal storage. Avoid repeated freeze-thaw cycles.

### Reconstitution

Adding sterile water, prepare a stock solution of 0.25 mg/ml. Concentration is measured by UV-Vis.

### SDS-PAGE



Mouse ESAM / Endothelial Cell Adhesion Molecule Protein (His Tag) SDS-PAGE