

Mouse CREG1 (Fc Tag) recombinant protein



Catalog Number: 501897

General Information

Gene Name Synonym

Cellular repressor of E1A-stimulated genes 1

Protein Construction

A DNA sequence encoding the mouse CREG (O88668)(Met1-Gln220) was expressed with the Fc region of human IgG1 at the C-terminus.

Organism

Mouse

Expression Host

Human Cells

QC Testing

Purity

> 90 % as determined by SDS-PAGE

Endotoxin

< 1.0 EU per μ g of the protein as determined by the LAL method

Stability

Samples are stable for up to twelve months from date of receipt at -70°C

Predicted N terminal

Arg 32

Molecular Mass

The recombinant mouse CREG/Fc is a disulfide-

linked homodimer. The reduced monomer comprises 430 amino acids and has a predicted molecular mass of 48.5 kDa. The apparent molecular mass of the protein is approximately 59 kDa in SDS-PAGE under reducing conditions due to glycosylation.

Formulation

Lyophilized from sterile PBS, pH 7.4.

1. 5 % trehalose and mannitol are added as protectants before lyophilization.

2. Please contact us for any concerns or special requirements.

Usage Guide

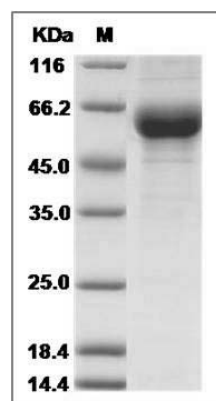
Storage

Store it under sterile conditions at -20°C to -80°C. It is recommended that the protein be aliquoted for optimal storage. Avoid repeated freeze-thaw cycles.

Reconstitution

Adding sterile water, prepare a stock solution of 0.25 mg/ml. Concentration is measured by UV-Vis.

SDS-PAGE



Mouse CREG / CREG1 Protein (Fc Tag) SDS-PAGE