

General Information

Protein Construction

A DNA sequence encoding the mature form of human PRTFDC1 (Q9NRG1-1) (Met1-Val225) was expressed with a polyhistidine tag at the N-terminus.

Organism

Human

Expression Host

E. coli

QC Testing

Purity

> 95 % as determined by SDS-PAGE

Endotoxin

Please contact us for more information.

Stability

Samples are stable for up to twelve months from date of receipt at -70°C

Predicted N terminal

His

Molecular Mass

The recombinant human PRTFDC1 consists of 240 amino acids and predicts a molecular mass of 27.5 KDa. It migrates as an approximately 19 KDa band

in SDS-PAGE under reducing conditions.

Formulation

Lyophilized from sterile 50mM Tris, 10% glycerol, pH 8.0

1. 5 % trehalose and mannitol are added as protectants before lyophilization.

2. Please contact us for any concerns or special requirements.

Usage Guide

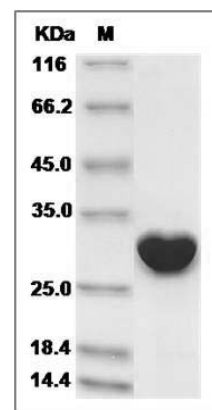
Storage

Store it under sterile conditions at -20°C to -80°C. It is recommended that the protein be aliquoted for optimal storage. Avoid repeated freeze-thaw cycles.

Reconstitution

Adding sterile water, prepare a stock solution of 0.25 mg/ml. Concentration is measured by UV-Vis.

SDS-PAGE



Human PRTFDC1 Protein (His Tag) SDS-PAGE