

# Human IGF1R/CD221 (His & GST Tag) recombinant protein



Catalog Number: 501890

## General Information

### Gene Name Synonym

Insulin-like growth factor I receptor; Insulin-like growth factor 1 receptor alpha chain; Insulin-like growth factor 1 receptor beta chain

### Protein Construction

A DNA sequence encoding the human IGF1R (NP\_000866.1) cytoplasmic domain (Met 954-Cys 1367) was fused with the N-terminal polyhistidine-tagged GST tag at the N-terminus.

### Organism

Human

### Expression Host

Baculovirus-Insect Cells

## QC Testing

### Activity

The specific activity was determined to be 146 nmol/min/mg using Poly(Glu,Tyr) 4:1 as substrate.

### Purity

> 85 % as determined by SDS-PAGE

### Endotoxin

< 1.0 EU per  $\mu$ g of the protein as determined by the LAL method

### Stability

Samples are stable for up to twelve months from date of receipt at -70°C

### Predicted N terminal

Met

### Molecular Mass

The recombinant human IGF1R (aa 954-1367) /GST chimera consists of 651 amino acids and has a calculated molecular mass of 74.6 KDa.

### Formulation

Lyophilized from sterile 20 mM Tris, 500 mM NaCl, 20 % glycerol, pH 7.4.

1. 5 % trehalose and mannitol are added as protectants before lyophilization.
2. Please contact us for any concerns or special requirements.

## Usage Guide

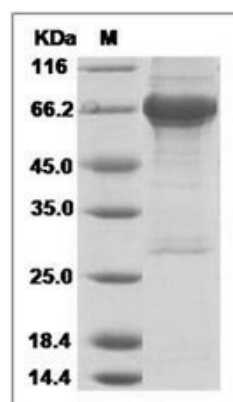
### Storage

Store it under sterile conditions at -20°C to -80°C. It is recommended that the protein be aliquoted for optimal storage. Avoid repeated freeze-thaw cycles.

### Reconstitution

Adding sterile water, prepare a stock solution of 0.25 mg/ml. Concentration is measured by UV-Vis.

### SDS-PAGE



Human IGF1R / CD221 Protein (His & GST Tag)