

General Information

Protein Construction

A DNA sequence encoding the Nucleoprotein (Human betacoronavirus 2c EMC/2012) (AFS88943.1) (Met 1-Asp413) was fused with a polyhistidine tag at the C-terminus.

Organism

MERS-CoV

Expression Host

Baculovirus-Insect Cells

QC Testing

Purity

> 95 % as determined by SDS-PAGE

Endotoxin

< 1.0 EU per μg of the protein as determined by the LAL method

Stability

Samples are stable for up to twelve months from date of receipt at -70°C

Predicted N terminal

Met 1

Molecular Mass

The recombinant Nucleoprotein (Human betacoronavirus 2c EMC/2012) comprises 423 amino acids and has a predicted molecular mass

of 46.4 kDa. It migrates as an approximately 46 kDa band in SDS-PAGE under reducing conditions.

Formulation

Lyophilized from sterile 20mM Tris, 500mM NaCl, 10% gly, pH 8.0.

1. 5 % trehalose and mannitol are added as protectants before lyophilization.

2. Please contact us for any concerns or special requirements.

Usage Guide

Storage

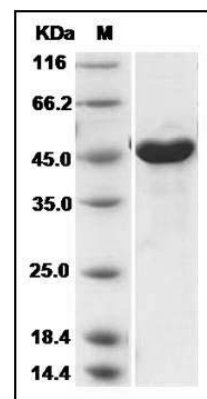
Store it under sterile conditions at -20°C to -80°C .

It is recommended that the protein be aliquoted for optimal storage. Avoid repeated freeze-thaw cycles.

Reconstitution

Adding sterile water, prepare a stock solution of 0.25 mg/ml. Concentration is measured by UV-Vis.

SDS-PAGE



Novel coronavirus (HCoV-EMC/2012)
Nucleoprotein / NP protein (His Tag) SDS-PAGE