

Human CCL2/MCP-1 (His Tag) recombinant protein



Catalog Number: 501837

General Information

Gene Name Synonym

HC11; Monocyte chemoattractant protein 1; Monocyte chemotactic and activating factor; Monocyte chemotactic protein 1; Monocyte secretory protein JE; Small-inducible cytokine A2

Protein Construction

A DNA sequence encoding the human CCL2 (NP_002973.1) (Gln24-Thr99) was expressed with a polyhistidine tag at the C-terminus.

Organism

Human

Expression Host

Yeast

QC Testing

Purity

> 95 % as determined by SDS-PAGE.

Endotoxin

Please contact us for more information.

Stability

Samples are stable for up to twelve months from date of receipt at -70°C

Predicted N terminal

Gln 24

Molecular Mass

The recombinant human CCL2 consists 86 amino acids and predicts a molecular mass of 10.1 kDa.

Formulation

Lyophilized from sterile PBS, pH 7.4.

1. 5 % trehalose and mannitol are added as protectants before lyophilization.

2. Please contact us for any concerns or special requirements.

Usage Guide

Storage

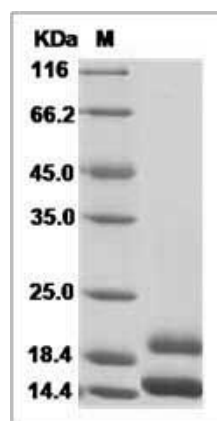
Store it under sterile conditions at -20°C to -80°C.

It is recommended that the protein be aliquoted for optimal storage. Avoid repeated freeze-thaw cycles.

Reconstitution

Adding sterile water, prepare a stock solution of 0.25 mg/ml. Concentration is measured by UV-Vis.

SDS-PAGE



Human CCL2 / MCP-1 / MCP1 Protein (His Tag)
SDS-PAGE