

# Human AIMP1/EMAP II (His Tag) recombinant protein



Catalog Number: 501745

## General Information

### Gene Name Synonym

Multisynthase complex auxiliary component p43;  
Endothelial monocyte-activating polypeptide 2;  
Endothelial monocyte-activating polypeptide II;  
Small inducible cytokine subfamily E member 1

### Protein Construction

A DNA sequence encoding the native human SCYE1 (NP\_004748.2) (Ala 2-Lys 312) was expressed, with a polyhistidine tag at the N-terminus.

### Organism

Human

### Expression Host

E. coli

## QC Testing

### Purity

> 97 % as determined by SDS-PAGE

### Endotoxin

Please contact us for more information.

### Stability

Samples are stable for up to twelve months from date of receipt at -70°C

### Predicted N terminal

Met 1

### Molecular Mass

The recombinant human SCYE1 consisting of 318 amino acids and migrates as an 35 kDa band in SDS-PAGE under reducing conditions as predicted.

### Formulation

Lyophilized from sterile PBS, pH 7.4

1. 5 % trehalose and mannitol are added as protectants before lyophilization.
2. Please contact us for any concerns or special requirements.

## Usage Guide

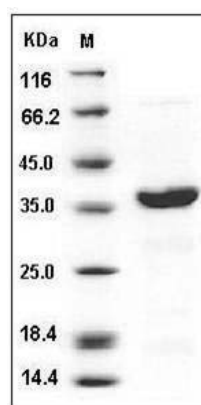
### Storage

Store it under sterile conditions at -20°C to -80°C. It is recommended that the protein be aliquoted for optimal storage. Avoid repeated freeze-thaw cycles.

### Reconstitution

Adding sterile water, prepare a stock solution of 0.25 mg/ml. Concentration is measured by UV-Vis.

### SDS-PAGE



Human AIMP1 / EMAP2 / SCYE1 Protein (His Tag)  
SDS-PAGE