

# Rat REG3A (Fc Tag) recombinant protein



Catalog Number: 501647

## General Information

### Gene Name Synonym

Islet of Langerhans regenerating protein 3; Lithostathine 3; Pancreatitis-associated protein 2; RegIII; Regenerating islet-derived protein III-alpha; Regenerating islet-derived protein 3-alpha 16.5 kDa form; Regenerating islet-derived protein 3-alpha 15 kDa form

### Protein Construction

A DNA sequence encoding the rat REG3A (BAA04904.1) (Met1-Gln174) was expressed, fused with the Fc region of human IgG1 at the C-terminus.

### Organism

Rat

### Expression Host

Human Cells

## QC Testing

### Purity

> 95 % as determined by SDS-PAGE

### Endotoxin

< 1.0 EU per  $\mu\text{g}$  of the protein as determined by the LAL method

### Stability

Samples are stable for up to twelve months from date of receipt at  $-70^{\circ}\text{C}$

### Predicted N terminal

Glu 26

## Molecular Mass

The recombinant rat REG3A/Fc is a disulfide-linked homodimer. The reduced monomer comprises 390 amino acids and has a predicted molecular mass of 43.4 kDa. The apparent molecular mass of the protein is approximately 44 kDa in SDS-PAGE under reducing conditions.

## Formulation

Lyophilized from sterile PBS, pH 7.4

1. 5 % trehalose and mannitol are added as protectants before lyophilization.
2. Please contact us for any concerns or special requirements.

## Usage Guide

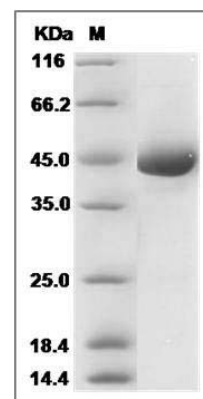
### Storage

Store it under sterile conditions at  $-20^{\circ}\text{C}$  to  $-80^{\circ}\text{C}$ . It is recommended that the protein be aliquoted for optimal storage. Avoid repeated freeze-thaw cycles.

### Reconstitution

Adding sterile water, prepare a stock solution of 0.25 mg/ml. Concentration is measured by UV-Vis.

## SDS-PAGE



Rat REG3A Protein (Fc Tag) SDS-PAGE