

Rat PEDF (His Tag) recombinant protein



Catalog Number: 501619

General Information

Gene Name Synonym

Protein Serpinf1; Serine (Or cysteine) peptidase inhibitor, clade F, member 1; Serine (Or cysteine) peptidase inhibitor, clade F, member 1, isoform CRA_c

Protein Construction

A DNA sequence encoding the rat Serpinf1 (NP_808788.1) (Met1-Thr418) was expressed with a polyhistidine tag at the C-terminus.

Organism

Rat

Expression Host

Human Cells

QC Testing

Purity

> 90 % as determined by SDS-PAGE.

Endotoxin

< 1.0 EU per μg protein as determined by the LAL method.

Stability

Samples are stable for up to twelve months from date of receipt at -70°C

Predicted N terminal

Gln 20

Molecular Mass

The recombinant rat Serpinf1 consists 410 amino acids and predicts a molecular mass of 45.9 kDa.

Formulation

Lyophilized from sterile PBS, pH 7.4.

1. 5 % trehalose and mannitol are added as protectants before lyophilization.

2. Please contact us for any concerns or special requirements.

Usage Guide

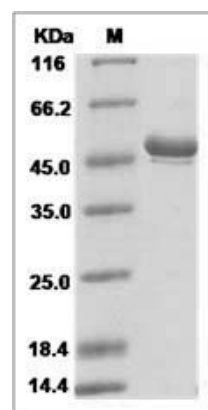
Storage

Store it under sterile conditions at -20°C to -80°C . It is recommended that the protein be aliquoted for optimal storage. Avoid repeated freeze-thaw cycles.

Reconstitution

Adding sterile water, prepare a stock solution of 0.25 mg/ml. Concentration is measured by UV-Vis.

SDS-PAGE



Rat SerpinF1 / PEDF Protein (His Tag)