

# Human CLEC4N/CLEC4N (Fc Tag) recombinant protein



Catalog Number: 501584

## General Information

### Gene Name Synonym

C-type lectin superfamily member 10; Dendritic cell-associated C-type lectin 2

### Protein Construction

A DNA sequence encoding the human DECTIN2 (NP\_001007034) (Thr 42-Leu209) was expressed, fused with the Fc region of human IgG1 at the N-terminus.

### Organism

Human

### Expression Host

Human Cells

## QC Testing

### Purity

> 80 % as determined by SDS-PAGE

### Endotoxin

< 1.0 EU per  $\mu\text{g}$  of the protein as determined by the LAL method

### Stability

Samples are stable for up to twelve months from date of receipt at  $-70^{\circ}\text{C}$

### Predicted N terminal

Glu

### Molecular Mass

The recombinant human DECTIN2 /Fc comprises 428 amino acids and has a predicted molecular mass of 47.9 kDa. The apparent molecular mass of the protein is approximately 52 kDa in SDS-PAGE under reducing conditions.

### Formulation

Lyophilized from sterile PBS, pH 7.4

1. 5 % trehalose and mannitol are added as protectants before lyophilization.
2. Please contact us for any concerns or special requirements.

## Usage Guide

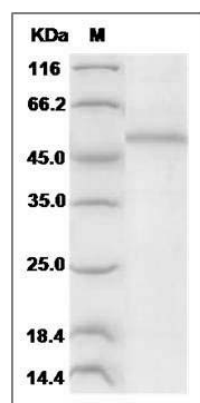
### Storage

Store it under sterile conditions at  $-20^{\circ}\text{C}$  to  $-80^{\circ}\text{C}$ . It is recommended that the protein be aliquoted for optimal storage. Avoid repeated freeze-thaw cycles.

### Reconstitution

Adding sterile water, prepare a stock solution of 0.25 mg/ml. Concentration is measured by UV-Vis.

### SDS-PAGE



Human CLEC4N / CLEC6A / Dectin-2 Protein (Fc Tag) SDS-PAGE