

# Mouse PPM1A/PP2CA (His Tag) recombinant protein



Catalog Number: 501570

## General Information

### Gene Name Synonym

Protein phosphatase 2C isoform alpha; Protein phosphatase IA

### Protein Construction

A DNA sequence encoding the mouse PPM1A (NP\_032936.1) (Met 1-Trp 382) was expressed, with a polyhistidine tag at the C-terminus.

### Organism

Mouse

### Expression Host

E. coli

## QC Testing

### Purity

> 98 % as determined by SDS-PAGE

### Endotoxin

Please contact us for more information.

### Stability

Samples are stable for up to twelve months from date of receipt at -70°C

### Predicted N terminal

Met 1

### Molecular Mass

The recombinant mouse PPM1A consisting of 388

amino acids and has a calculated molecular mass of 43.3 kDa as estimated in SDS-PAGE under reducing conditions.

### Formulation

Lyophilized from sterile 10mM HEPES, 500 NaCl, pH 7.5

1. 5 % trehalose and mannitol are added as protectants before lyophilization.
2. Please contact us for any concerns or special requirements.

## Usage Guide

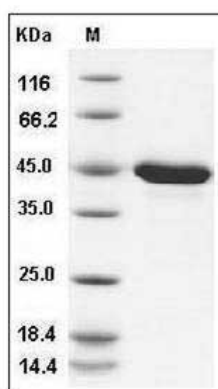
### Storage

Store it under sterile conditions at -20°C to -80°C. It is recommended that the protein be aliquoted for optimal storage. Avoid repeated freeze-thaw cycles.

### Reconstitution

Adding sterile water, prepare a stock solution of 0.25 mg/ml. Concentration is measured by UV-Vis.

### SDS-PAGE



Mouse PPM1A / PP2CA / PP2C-alpha Protein (His Tag) SDS-PAGE