

Human VWF (His Tag) recombinant protein



Catalog Number: 501538

General Information

Gene Name Synonym

von Willebrand antigen 2; von Willebrand antigen II

Protein Construction

A DNA sequence encoding the pro form of human von Willebrand factor (NP_000543.2) (Met 1-Lys 2813) was expressed with a C-terminal polyhistidine tag.

Organism

Human

Expression Host

CHO Stable Cells

QC Testing

Purity

> 75 % as determined by SDS-PAGE

Endotoxin

< 1.0 EU per μ g of the protein as determined by the LAL method

Stability

Samples are stable for up to twelve months from date of receipt at -70°C

Predicted N terminal

Ala 23

Molecular Mass

The secreted recombinant human vWF consists of 2802 amino acids after removal of the signal

peptide and has a predicted molecular mass of 308 kDa. Purified rhvWf exists as both the pro form with the pro peptide (307 kDa) and the mature form (226 kDa), which migrates as doublets with apparent molecular mass of 260 and 350 kDa respectively in SDS-PAGE under reducing conditions due to glycosylation.

Formulation

Lyophilized from sterile PBS, pH 7.4

1. 5 % trehalose and mannitol are added as protectants before lyophilization.

2. Please contact us for any concerns or special requirements.

Usage Guide

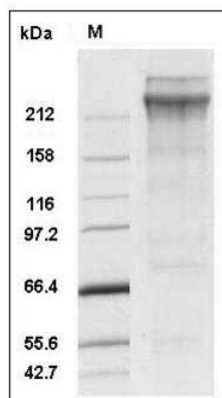
Storage

Store it under sterile conditions at -20°C to -80°C. It is recommended that the protein be aliquoted for optimal storage. Avoid repeated freeze-thaw cycles.

Reconstitution

Adding sterile water, prepare a stock solution of 0.25 mg/ml. Concentration is measured by UV-Vis.

SDS-PAGE



Human vWF Protein (His Tag) SDS-PAGE