

## General Information

### Gene Name Synonym

CD300 antigen-like family member A; Leukocyte mono-Ig-like receptor 1; Mast cell-derived paired immunoglobulin-like receptor 1; Myeloid-associated immunoglobulin-like receptor 1

### Protein Construction

A DNA sequence encoding the mouse CD300A (Q6SJQ0-1) (Met 1-Arg 183) extracellular domain was fused with the Fc region of human IgG1 at the C-terminus.

### Organism

Mouse

### Expression Host

Human Cells

## QC Testing

### Purity

> 92 % as determined by SDS-PAGE

### Endotoxin

< 1.0 EU per  $\mu\text{g}$  of the protein as determined by the LAL method

### Stability

Samples are stable for up to twelve months from date of receipt at  $-70^{\circ}\text{C}$

### Predicted N terminal

Leu 28

### Molecular Mass

The recombinant mouse CD300A/Fc is a disulfide-linked homodimer. The reduced monomer comprises 397 amino acids and has a predicted molecular mass of 44.2 kDa. The apparent molecular mass of rmCD300A/Fc monomer is approximately 55-65 kDa in SDS-PAGE under reducing conditions.

### Formulation

Lyophilized from sterile PBS, pH 7.4

1. 5 % trehalose and mannitol are added as protectants before lyophilization.

2. Please contact us for any concerns or special requirements.

## Usage Guide

### Storage

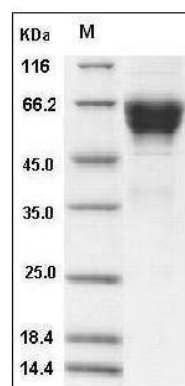
Store it under sterile conditions at  $-20^{\circ}\text{C}$  to  $-80^{\circ}\text{C}$ .

It is recommended that the protein be aliquoted for optimal storage. Avoid repeated freeze-thaw cycles.

### Reconstitution

Adding sterile water, prepare a stock solution of 0.25 mg/ml. Concentration is measured by UV-Vis.

### SDS-PAGE



Mouse CD300A Protein (Fc Tag) SDS-PAGE