

Mouse BCAM / CD239 (Fc Tag) recombinant protein



Catalog Number: 501520

General Information

Gene Name Synonym

B-CAM cell surface glycoprotein; Lutheran antigen

Protein Construction

A DNA sequence encoding the extracellular domain of mouse BCAM (Q9R069) (Met 1-Ala 541) was fused with the Fc region of human IgG1 at the C-terminus.

Organism

Mouse

Expression Host

Human Cells

QC Testing

Activity

Measured by the ability of the immobilized protein to support the adhesion of HOS human osteogenic sarcoma cells.

When cells are added to coated plates (5 µg/mL, 100 µL/well), approximately 30-70% will adhere for 1 hour incubation at 37°C.

Purity

> 92 % as determined by SDS-PAGE

Endotoxin

< 1.0 EU per µg of the protein as determined by the LAL method

Stability

Samples are stable for up to twelve months from date of receipt at -70°C

Predicted N terminal

Glu 26

Molecular Mass

The secreted recombinant mouse BCAMFc is a disulfide-linked homodimer. The reduced monomer comprises 757 amino acids and has a calculated molecular mass of 84 kDa. As a result of glycosylation, the apparent molecular mass of rmBCAM/Fc monomer is approximately 95-105 kDa in SDS-PAGE under reducing conditions.

Formulation

Lyophilized from sterile PBS, pH 7.4

1. 5 % trehalose and mannitol are added as protectants before lyophilization.

2. Please contact us for any concerns or special requirements.

Usage Guide

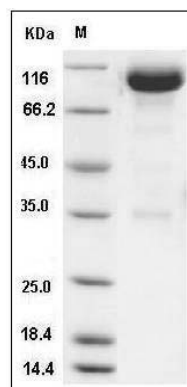
Storage

Store it under sterile conditions at -20°C to -80°C. It is recommended that the protein be aliquoted for optimal storage. Avoid repeated freeze-thaw cycles.

Reconstitution

Adding sterile water, prepare a stock solution of 0.25 mg/ml. Concentration is measured by UV-Vis.

SDS-PAGE



Mouse BCAM Protein (Fc Tag) SDS-PAGE