

# Human Lactotransferrin/LTF (His Tag) recombinant protein



Catalog Number: 501472

## General Information

### Gene Name Synonym

Growth-inhibiting protein 12; Talalactoferrin;  
Lactoferricin-H; Kaliocin-1; Lactoferroxin-A;  
Lactoferroxin-B; Lactoferroxin-C

### Protein Construction

A DNA sequence encoding the human LTF (P02788) (Met 1-Lys 710) was expressed, fused with a polyhistidine tag at the C-terminus.

### Organism

Human

### Expression Host

Human Cells

## QC Testing

### Purity

> 95 % as determined by SDS-PAGE

### Endotoxin

< 1.0 EU per  $\mu$ g of the protein as determined by the LAL method

### Stability

Samples are stable for up to twelve months from date of receipt at -70°C

### Predicted N terminal

Gly 20

### Molecular Mass

The secreted recombinant human LTF consists of

702 amino acids and has a predicted molecular mass of 77.5 kDa. As a result of glycosylation, the apparent molecular mass of rhLTF is approximately 80 kDa in SDS-PAGE under reducing conditions.

### Formulation

Lyophilized from sterile PBS, pH 7.4

1. 5 % trehalose and mannitol are added as protectants before lyophilization.

2. Please contact us for any concerns or special requirements.

## Usage Guide

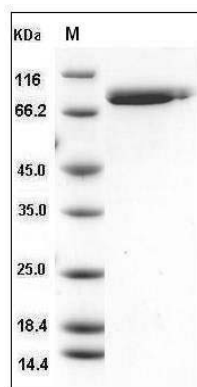
### Storage

Store it under sterile conditions at -20°C to -80°C. It is recommended that the protein be aliquoted for optimal storage. Avoid repeated freeze-thaw cycles.

### Reconstitution

Adding sterile water, prepare a stock solution of 0.25 mg/ml. Concentration is measured by UV-Vis.

### SDS-PAGE



Human Lactotransferrin / LTF Protein (His Tag)  
SDS-PAGE