

## General Information

### Protein Construction

A DNA sequence encoding the canine TGFB2 (XP\_858677.1) (Met1-Ser414) was expressed with a polyhistidine tag at the C-terminus.

### Organism

Canine

### Expression Host

Human Cells

## QC Testing

### Purity

> (32+46+17) % as determined by SDS-PAGE.

### Endotoxin

<1.0 EU per µg protein as determined by the LAL method.

### Stability

Samples are stable for up to twelve months from date of receipt at -70°C

### Predicted N terminal

Leu 21

### Molecular Mass

The recombinant canine TGFB2 consists 405 amino acids and predicts a molecular mass of 47

kDa.

### Formulation

Lyophilized from sterile PBS, pH 7.4.

1. 5 % trehalose and mannitol are added as protectants before lyophilization.

2. Please contact us for any concerns or special requirements.

## Usage Guide

### Storage

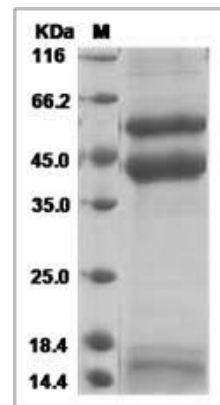
Store it under sterile conditions at -20°C to -80°C.

It is recommended that the protein be aliquoted for optimal storage. Avoid repeated freeze-thaw cycles.

### Reconstitution

Adding sterile water, prepare a stock solution of 0.25 mg/ml. Concentration is measured by UV-Vis.

### SDS-PAGE



Canine TGFB2 / TGF-beta 2 Protein (His Tag)  
SDS-PAGE