

# Human WAP5 / WFDC2 / HE4 (His Tag) recombinant protein



Catalog Number: 501403

## General Information

### Gene Name Synonym

Epididymal secretory protein E4; Major epididymis-specific protein E4; Putative protease inhibitor WAP5

### Protein Construction

A DNA sequence encoding the human WFDC2 (NP\_006094.3) (Met 1-Phe 124) was expressed, with a C-terminal polyhistidine tag.

### Organism

Human

### Expression Host

Human Cells

## QC Testing

### Purity

> 95 % as determined by SDS-PAGE

### Endotoxin

< 1.0 EU per  $\mu\text{g}$  of the protein as determined by the LAL method

### Stability

Samples are stable for up to twelve months from date of receipt at  $-70^{\circ}\text{C}$

### Predicted N terminal

Glu 31

### Molecular Mass

The secreted recombinant human WFDC2

comprises 105 amino acids with a predicted molecular mass of 11.3 kDa. As a result of glycosylation, the apparent molecular mass of rhWFDC2 is approximately 23-27 kDa in SDS-PAGE under reducing conditions.

### Formulation

Lyophilized from sterile PBS, pH 7.4

1. 5 % trehalose and mannitol are added as protectants before lyophilization.
2. Please contact us for any concerns or special requirements.

## Usage Guide

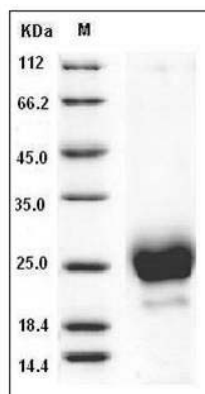
### Storage

Store it under sterile conditions at  $-20^{\circ}\text{C}$  to  $-80^{\circ}\text{C}$ . It is recommended that the protein be aliquoted for optimal storage. Avoid repeated freeze-thaw cycles.

### Reconstitution

Adding sterile water, prepare a stock solution of 0.25 mg/ml. Concentration is measured by UV-Vis.

### SDS-PAGE



Human WAP5 / WFDC2 / HE4 Protein (His Tag)  
SDS-PAGE