

General Information

Gene Name Synonym

Hepatointestinal pancreatic protein; Human proislet peptide; Pancreatitis-associated protein 1; Regenerating islet-derived protein III-alpha; Regenerating islet-derived protein 3-alpha 16.5 kDa form; Regenerating islet-derived protein 3-alpha 15 kDa form

Protein Construction

A DNA sequence encoding the human REG3A (Q06141-1) (Met 1-Asp 175) precursor was fused with a polyhistidine tag at the C-terminus.

Organism

Human

Expression Host

Human Cells

QC Testing

Purity

> 97 % as determined by SDS-PAGE

Endotoxin

< 1.0 EU per μg of the protein as determined by the LAL method

Stability

Samples are stable for up to twelve months from date of receipt at -70°C

Predicted N terminal

Glu 27

Molecular Mass

The recombinant human REG3A consists of 160 amino acids after removal of the signal peptide and has a predicted molecular mass of 18 kDa as estimated in SDS-PAGE under reducing conditions.

Formulation

Lyophilized from sterile PBS, pH 7.4
1. 5 % trehalose and mannitol are added as protectants before lyophilization.
2. Please contact us for any concerns or special requirements.

Usage Guide

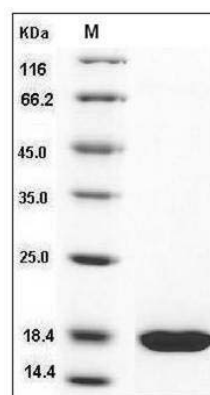
Storage

Store it under sterile conditions at -20°C to -80°C . It is recommended that the protein be aliquoted for optimal storage. Avoid repeated freeze-thaw cycles.

Reconstitution

Adding sterile water, prepare a stock solution of 0.25 mg/ml. Concentration is measured by UV-Vis.

SDS-PAGE



Human REG3A / HIP Protein (His Tag) SDS-PAGE