

Human Cystatin E / CST6 (His Tag) recombinant protein



Catalog Number: 501335

General Information

Gene Name Synonym

Cystatin-6; Cystatin-E

Protein Construction

A DNA sequence encoding the human cystatin E/M protein (NP_001314.1) (Met 1-Met 149) was expressed with a C-terminal polyhistidine-tag.

Organism

Human

Expression Host

Human Cells

QC Testing

Activity

Measured by its ability to inhibit papain cleavage of a fluorogenic peptide substrate ZF RAMC, R&D Systems, Catalog # ES009. IC₅₀ < 2nM.

Purity

> 95 % as determined by SDS-PAGE

Endotoxin

< 1.0 EU per µg of the protein as determined by the LAL method

Stability

Samples are stable for up to twelve months from date of receipt at -70°C

Predicted N terminal

Arg 29

Molecular Mass

The mature form of recombinant human cystatin E/M consists of 132 amino acids and predicts a molecular mass of 15 kDa. It exists as two major forms with an identical N-terminal sequence. As a result of glycosylation, rh cystatin E/M migrates as doublets with the molecular mass of approximately 15 and 21 kDa respectively in SDS-PAGE under reducing conditions.

Formulation

Lyophilized from sterile 25mM MES, 0.15M NaCl, pH 6.5

1. 5 % trehalose and mannitol are added as protectants before lyophilization.
2. Please contact us for any concerns or special requirements.

Usage Guide

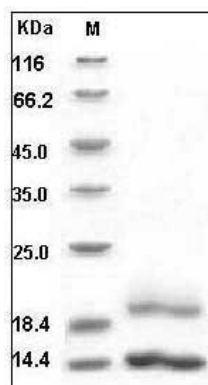
Storage

Store it under sterile conditions at -20°C to -80°C. It is recommended that the protein be aliquoted for optimal storage. Avoid repeated freeze-thaw cycles.

Reconstitution

Adding sterile water, prepare a stock solution of 0.25 mg/ml. Concentration is measured by UV-Vis.

SDS-PAGE



Human Cystatin E / CST6 Protein (His Tag) SDS-PAGE