

# Human CXCL12 / SDF-1 beta (Fc Tag) recombinant protein



Catalog Number: 501323

## General Information

### Gene Name Synonym

C-X-C motif chemokine 12; Intercrine reduced in hepatomas; Pre-B cell growth-stimulating factor; SDF-1-beta(3-72); SDF-1-alpha(3-67)

### Protein Construction

A DNA sequence encoding the N-terminally truncated human SDF1? (NP\_000600.1) (Lys 22-Met 93) was expressed with the fused Fc region of human IgG1 at the N-terminus.

### Organism

Human

### Expression Host

Human Cells

## QC Testing

### Activity

Measured by its ability to bind biotinylated recombinant human DPPIV in a functional ELISA.

### Purity

> 95 % as determined by SDS-PAGE

### Endotoxin

< 1.0 EU per µg of the protein as determined by the LAL method

### Stability

Samples are stable for up to twelve months from date of receipt at -70°C

### Predicted N terminal

Glu 20

## Molecular Mass

The recombinant human SDF1/Fc is a disulfide-linked homodimeric protein. The reduced monomer consists of 309 amino acids and predicts a molecular mass of 35.2 kDa. As a result of glycosylation, rhSDF1/Fc monomer is approximately 43 kDa in SDS-PAGE under reducing conditions.

## Formulation

Lyophilized from sterile PBS, pH 7.4

1. 5 % trehalose and mannitol are added as protectants before lyophilization.

2. Please contact us for any concerns or special requirements.

## Usage Guide

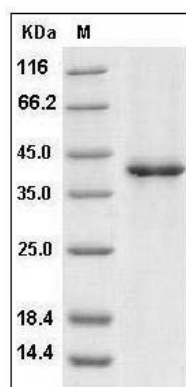
### Storage

Store it under sterile conditions at -20°C to -80°C. It is recommended that the protein be aliquoted for optimal storage. Avoid repeated freeze-thaw cycles.

### Reconstitution

Adding sterile water, prepare a stock solution of 0.25 mg/ml. Concentration is measured by UV-Vis.

## SDS-PAGE



Human CXCL12 / SDF1b Protein (Fc Tag) SDS-PAGE