

Human Complexin-2/CPLX2 (His Tag) recombinant protein



Catalog Number: 501249

General Information

Gene Name Synonym

Complexin II; Synaphin-1

Protein Construction

A DNA sequence encoding the human CPLX2 (Q6PUV4-1) (Asp 2-Lys 134) was expressed, with a polyhistidine tag at the N-terminus.

Organism

Human

Expression Host

E. coli

QC Testing

Purity

> 90 % as determined by SDS-PAGE

Endotoxin

Please contact us for more information.

Stability

Samples are stable for up to twelve months from date of receipt at -70°C

Predicted N terminal

Met

Molecular Mass

The recombinant human CPLX2 consists of 144

amino acids and has a calculated molecular mass of 16.8 kDa. It migrates as an 21 kDa band in SDS-PAGE under reducing conditions.

Formulation

Lyophilized from sterile PBS, pH 7.4

1. 5 % trehalose and mannitol are added as protectants before lyophilization.

2. Please contact us for any concerns or special requirements.

Usage Guide

Storage

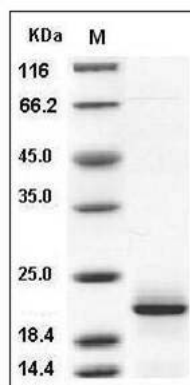
Store it under sterile conditions at -20°C to -80°C.

It is recommended that the protein be aliquoted for optimal storage. Avoid repeated freeze-thaw cycles.

Reconstitution

Adding sterile water, prepare a stock solution of 0.25 mg/ml. Concentration is measured by UV-Vis.

SDS-PAGE



Human Complexin-2 / CPLX2 Protein (His Tag)
SDS-PAGE