

# Rat GPT1/GPT (His Tag) recombinant protein



Catalog Number: 501212

## General Information

### Gene Name Synonym

Glutamate pyruvate transaminase 1; Glutamic--alanine transaminase 1; Glutamic--pyruvic transaminase 1

### Protein Construction

A DNA sequence encoding the rat Gpt1 (NP\_112301.1) (Met 1-Ser 496) with a C-terminal polyhistidine tag was expressed.

### Organism

Rat

### Expression Host

Baculovirus-Insect Cells

## QC Testing

### Purity

> 95 % as determined by SDS-PAGE

### Endotoxin

< 1.0 EU per  $\mu\text{g}$  of the protein as determined by the LAL method

### Stability

Samples are stable for up to twelve months from date of receipt at  $-70^{\circ}\text{C}$

### Predicted N terminal

Met 1

### Molecular Mass

The recombinant rat Gpt1 comprises 506 amino acids with a predicted molecular mass of 55 kDa. It migrates as an approximately 48 kDa band in reduced SDS-PAGE.

### Formulation

Lyophilized from sterile 50mM Tris, 100mM NaCl, pH 8.0, 10% glycerol, 0.5mM TCEP

1. 5 % trehalose and mannitol are added as protectants before lyophilization.
2. Please contact us for any concerns or special requirements.

## Usage Guide

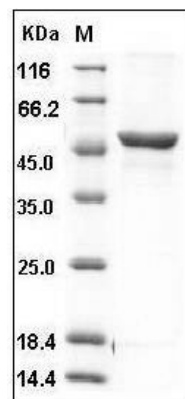
### Storage

Store it under sterile conditions at  $-20^{\circ}\text{C}$  to  $-80^{\circ}\text{C}$ . It is recommended that the protein be aliquoted for optimal storage. Avoid repeated freeze-thaw cycles.

### Reconstitution

Adding sterile water, prepare a stock solution of 0.25 mg/ml. Concentration is measured by UV-Vis.

### SDS-PAGE



Rat GPT1 / GPT Protein (His Tag) SDS-PAGE