

Mouse PLA2G1B (His Tag) recombinant protein



Catalog Number: 501190

General Information

Gene Name Synonym

Group IB phospholipase A2; PLA2-Ib;
Phosphatidylcholine 2-acylhydrolase 1B

Protein Construction

A DNA sequence encoding the mouse PLA2G1B (NP_035237.1) extracellular domain (Met 1-Cys 146) was fused with a polyhistidine tag at the C-terminus.

Organism

Mouse

Expression Host

Human Cells

QC Testing

Purity

> 96 % as determined by SDS-PAGE

Endotoxin

< 1.0 EU per μg of the protein as determined by the LAL method

Stability

Samples are stable for up to twelve months from date of receipt at -70°C

Predicted N terminal

Ala 16

Molecular Mass

The secreted recombinant mouse PLA2G1B consists of 142 amino acids and has a predicted molecular mass of 16.3 kDa. rmPLA2G1B migrates as an approximately 18 kDa band in SDS-PAGE under reducing conditions.

Formulation

Lyophilized from sterile PBS, pH 7.4

1. 5 % trehalose and mannitol are added as protectants before lyophilization.
2. Please contact us for any concerns or special requirements.

Usage Guide

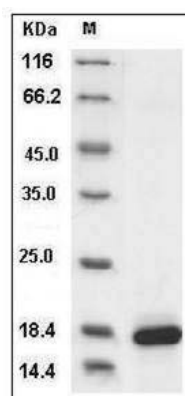
Storage

Store it under sterile conditions at -20°C to -80°C . It is recommended that the protein be aliquoted for optimal storage. Avoid repeated freeze-thaw cycles.

Reconstitution

Adding sterile water, prepare a stock solution of 0.25 mg/ml. Concentration is measured by UV-Vis.

SDS-PAGE



Mouse PLA2G1B / Phospholipase-A2 Protein (His Tag) SDS-PAGE