

Human CGREF1 (His Tag) recombinant protein



Catalog Number: 501111

General Information

Gene Name Synonym

Cell growth regulatory gene 11 protein;
Hydrophobestin

Protein Construction

A DNA sequence encoding the human CGREF1 (Q99674-1) (Met1-Ile301) was expressed with a C-terminal polyhistidine tag.

Organism

Human

Expression Host

Human Cells

QC Testing

Purity

(71.7+22.2) % as determined by SDS-PAGE

Endotoxin

< 1.0 EU per μ g of the protein as determined by the LAL method

Stability

Samples are stable for up to twelve months from date of receipt at -70°C

Predicted N terminal

Ala 20

Molecular Mass

The recombinant human CGREF1 comprises 293 amino acids and has a predicted molecular mass of 31.3 kDa. The apparent molecular mass of the protein is approximately 38-42 and 33 kDa in SDS-PAGE under reducing conditions.

Formulation

Lyophilized from sterile PBS, pH 7.4.

1. 5 % trehalose and mannitol are added as protectants before lyophilization.
2. Please contact us for any concerns or special requirements.

Usage Guide

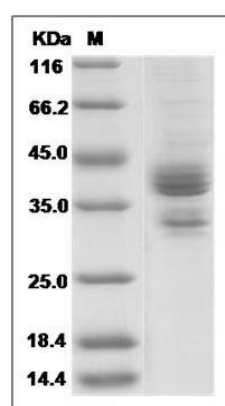
Storage

Store it under sterile conditions at -20°C to -80°C. It is recommended that the protein be aliquoted for optimal storage. Avoid repeated freeze-thaw cycles.

Reconstitution

Adding sterile water, prepare a stock solution of 0.25 mg/ml. Concentration is measured by UV-Vis.

SDS-PAGE



Human CGREF1 Protein (His Tag) SDS-PAGE