

Rhesus SFTPD / SP-D / SFTPD4 (His Tag) recombinant protein



Catalog Number: 501065

General Information

Protein Construction

A DNA sequence encoding the rhesus SFTPD (NP_001035283.1) (Met 1-Phe 375) precursor was expressed with a C-terminal polyhistidine tag.

Organism

Rhesus

Expression Host

Human Cells

QC Testing

Purity

> 95 % as determined by SDS-PAGE

Endotoxin

< 1.0 EU per μg of the protein as determined by the LAL method

Stability

Samples are stable for up to twelve months from date of receipt at -70°C

Predicted N terminal

Asp 22

Molecular Mass

The recombinant rhesus SFTPD consists of 365 amino acids and has a calculated molecular mass

of 36.8 kDa.

Formulation

Lyophilized from sterile PBS, pH 7.4

1. 5 % trehalose and mannitol are added as protectants before lyophilization.

2. Please contact us for any concerns or special requirements.

Usage Guide

Storage

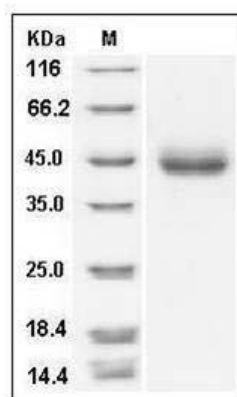
Store it under sterile conditions at -20°C to -80°C .

It is recommended that the protein be aliquoted for optimal storage. Avoid repeated freeze-thaw cycles.

Reconstitution

Adding sterile water, prepare a stock solution of 0.25 mg/ml. Concentration is measured by UV-Vis.

SDS-PAGE



Cynomolgus SFTPD / SP-D / SFTPD4 Protein (His Tag) SDS-PAGE