

Human Kallikrein-15 / KLK15 (Fc Tag) recombinant protein



Catalog Number: 501058

General Information

Gene Name Synonym

Kallikrein 15 isoform 6 preproprotein; Kallikrein 15, isoform CRA_c

Protein Construction

A DNA sequence encoding the human KLK15 (NP_059979.2) (Met1-Asn256) was expressed with the Fc region of human IgG1 at the C-terminus.

Organism

Human

Expression Host

Human Cells

QC Testing

Purity

> 80 % as determined by SDS-PAGE.

Endotoxin

<1.0 EU per μg protein as determined by the LAL method.

Stability

Samples are stable for up to twelve months from date of receipt at -70°C

Predicted N terminal

Gln 17

Molecular Mass

The recombinant human KLK15 consists 478 amino acids and predicts a molecular mass of 53.1 kDa.

Formulation

Lyophilized from sterile PBS, pH 7.4.

1. 5 % trehalose and mannitol are added as protectants before lyophilization.

2. Please contact us for any concerns or special requirements.

Usage Guide

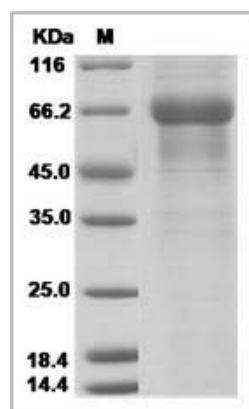
Storage

Store it under sterile conditions at -20°C to -80°C . It is recommended that the protein be aliquoted for optimal storage. Avoid repeated freeze-thaw cycles.

Reconstitution

Adding sterile water, prepare a stock solution of 0.25 mg/ml. Concentration is measured by UV-Vis.

SDS-PAGE



KLK15 protein SDS-PAGE