

Human GFRA1 (His Tag) recombinant protein



Catalog Number: 501004

General Information

Gene Name Synonym

RET ligand 1; TGF-beta-related neurotrophic factor receptor 1

Protein Construction

A DNA sequence encoding the human GFR?1 without the propeptide (NP_665736.1) (Met 1-Ser 424) was fused with the a polyhistidine tag at the C-terminus.

Organism

Human

Expression Host

Human Cells

QC Testing

Activity

1. Measured in a cell proliferation assay using SH-SY5Y human neuroblastoma cells. The ED₅₀ for this effect is typically 0.2-1 µg/mL in the presence of 40 ng/mL Recombinant Human GDNF.
2. Measured by its ability to bind human GDNF (native) in functional ELISA.

Purity

> 98 % as determined by SDS-PAGE

Endotoxin

< 1.0 EU per µg of the protein as determined by the LAL method

Stability

Samples are stable for up to twelve months from date of receipt at -70°C

Predicted N terminal

Asp 25

Molecular Mass

The recombinant human GFR?1 consists of 411 amino acids after removal of the signal peptide and predicts a molecular mass of 46 kDa. As a result of glycosylation, the rhGFR?1 migrates as an approximately 55-60 kDa protein in SDS-PAGE under reducing conditions.

Formulation

Lyophilized from sterile PBS, pH 7.4

1. 5 % trehalose and mannitol are added as protectants before lyophilization.
2. Please contact us for any concerns or special requirements.

Usage Guide

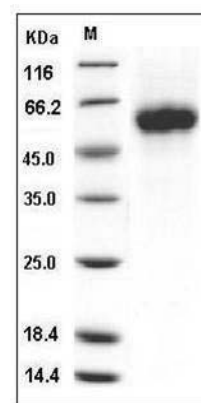
Storage

Store it under sterile conditions at -20°C to -80°C. It is recommended that the protein be aliquoted for optimal storage. Avoid repeated freeze-thaw cycles.

Reconstitution

Adding sterile water, prepare a stock solution of 0.25 mg/ml. Concentration is measured by UV-Vis.

SDS-PAGE



Human GFRA1 / GFR?1 / GDNFRA Protein (His Tag) SDS-PAGE