

# Mouse IL-1F6 recombinant protein



Catalog Number: 500957

## General Information

### Gene Name Synonym

FIL1 epsilon; Interleukin-1 epsilon; Interleukin-1 family member 6; Interleukin-1 homolog 1

### Protein Construction

A DNA sequence encoding the mouse IL1F6 (Q9JLA2-1) (Met 1-His 160) was expressed and purified.

### Organism

Mouse

### Expression Host

E. coli

## QC Testing

### Purity

> 97 % as determined by SDS-PAGE

### Endotoxin

Please contact us for more information.

### Stability

Samples are stable for up to twelve months from date of receipt at -70°C

### Predicted N terminal

Met 1

### Molecular Mass

The recombinant mouse IL1F6 consisting of 160 amino acids and migrates with an apparent molecular mass of 18 kDa as predicted.

### Formulation

Lyophilized from sterile PBS, pH 7.4

1. 5 % trehalose and mannitol are added as protectants before lyophilization.

2. Please contact us for any concerns or special requirements.

## Usage Guide

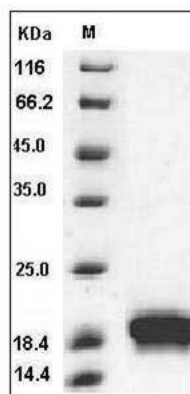
### Storage

Store it under sterile conditions at -20°C to -80°C. It is recommended that the protein be aliquoted for optimal storage. Avoid repeated freeze-thaw cycles.

### Reconstitution

Adding sterile water, prepare a stock solution of 0.25 mg/ml. Concentration is measured by UV-Vis.

### SDS-PAGE



Mouse IL-1F6 / IL-1 epsilon Protein SDS-PAGE