

# Mouse HER3/ErbB3 (His Tag) recombinant protein



Catalog Number: 500901

## General Information

### Gene Name Synonym

Glial growth factor receptor; Proto-oncogene-like protein c-ErbB-3

### Protein Construction

A DNA sequence encoding the mouse ERBB3 (Q61526) extracellular domain (Met 1-His 641) was expressed, with a C-terminal polyhistidine tag.

### Organism

Mouse

### Expression Host

Human Cells

## QC Testing

### Activity

Measured by its binding ability in a functional ELISA.

1. Immobilized mouse ErbB3-His (Cat: 500901) at 10 µg/ml (100 µl/well) can bind biotinylated human NRG1 (isoform Beta1) (Cat: 503891) with a linear range of 0.018-0.125 µg/ml.
2. Immobilized mouse ErbB3-His (Cat: 500901) at 10 µg/ml (100 µl/well) can bind biotinylated human NRG1 (aa 2-246)-Fc (Cat: 11609-H04) with a linear range of 6.25-100 ng/ml.

### Purity

> 93 % as determined by SDS-PAGE

### Endotoxin

< 1.0 EU per µg of the protein as determined by the LAL method

### Stability

Samples are stable for up to twelve months from

date of receipt at -70°C

### Predicted N terminal

Ser 20

### Molecular Mass

The secreted recombinant mouse ERBB3 comprises 633 amino acids and has a calculated molecular mass of 70 kDa. As a result of glycosylation, the apparent molecular mass of the recombinant protein is approximately 95 kDa in SDS-PAGE under reducing conditions.

### Formulation

Lyophilized from sterile PBS, pH 7.4

1. 5 % trehalose and mannitol are added as protectants before lyophilization.
2. Please contact us for any concerns or special requirements.

## Usage Guide

### Storage

Store it under sterile conditions at -20°C to -80°C. It is recommended that the protein be aliquoted for optimal storage. Avoid repeated freeze-thaw cycles.

### Reconstitution

Adding sterile water, prepare a stock solution of 0.25 mg/ml. Concentration is measured by UV-Vis.

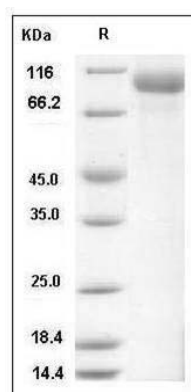
### SDS-PAGE

# Mouse HER3/ErbB3 (His Tag) recombinant protein



Catalog Number: 500901

---



Mouse HER3 / ErbB3 Protein (His Tag) SDS-PAGE