

# Human Ly108/SLAMF6 (His Tag) recombinant protein



Catalog Number: 500868

## General Information

### Gene Name Synonym

Activating NK receptor; NK-T-B-antigen

### Protein Construction

A DNA sequence encoding the human SLAMF6 (Q96DU3-1) extracellular domain (Met 1-Met 226) was expressed, with a polyhistidine tag at the C-terminus.

### Organism

Human

### Expression Host

Human Cells

## QC Testing

### Activity

Measured by its ability to bind biotinylated recombinant human SH2D1A in a functional ELISA.

### Purity

> 90 % as determined by SDS-PAGE

### Endotoxin

< 1.0 EU per  $\mu$ g of the protein as determined by the LAL method

### Stability

Samples are stable for up to twelve months from date of receipt at -70°C

### Predicted N terminal

Gln 22

## Molecular Mass

The recombinant human SLAMF6 consists of 216 amino acids and predicts a molecular mass of 24.3 kDa. In SDS-PAGE under reducing conditions, the apparent molecular mass of rhSLAMF6 is approximately 38-40 kDa due to glycosylation.

## Formulation

Lyophilized from sterile PBS, pH 7.4

1. 5 % trehalose and mannitol are added as protectants before lyophilization.

2. Please contact us for any concerns or special requirements.

## Usage Guide

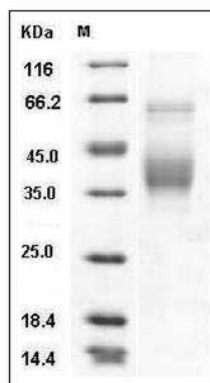
### Storage

Store it under sterile conditions at -20°C to -80°C. It is recommended that the protein be aliquoted for optimal storage. Avoid repeated freeze-thaw cycles.

### Reconstitution

Adding sterile water, prepare a stock solution of 0.25 mg/ml. Concentration is measured by UV-Vis.

## SDS-PAGE



Human SLAMF6 / Ly108 Protein (His Tag) SDS-PAGE