

Human CHI3L1/YKL40 (His Tag) recombinant protein



Catalog Number: 500844

General Information

Protein Construction

A DNA sequence encoding the human CHI3L1 (NP_001267.2) (Met 1-Thr 383) was fused with a polyhistidine tag at the C-terminus.

Organism

Human

Expression Host

Human Cells

QC Testing

Activity

Measured by the ability of the immobilized protein to support the adhesion of Fadu human squamous cell carcinoma cells (ATCC:HTB43). When cells are added to recombinant human CHI3L1 coated plates (1.5 µg/ml, 100 µl/well), approximately 65%-75% will adhere specifically after 30 minutes at 37°C.

Purity

> 95 % as determined by SDS-PAGE

Endotoxin

< 1.0 EU per µg of the protein as determined by the LAL method

Stability

Samples are stable for up to twelve months from date of receipt at -70°C

Predicted N terminal

Tyr 22

Molecular Mass

The recombinant human CHI3L1 consists of 373 amino acids and has a predicted molecular mass of 42 kDa as estimated in SDS-PAGE under reducing conditions.

Formulation

Lyophilized from sterile PBS, pH 7.4

1. 5 % trehalose and mannitol are added as protectants before lyophilization.
2. Please contact us for any concerns or special requirements.

Usage Guide

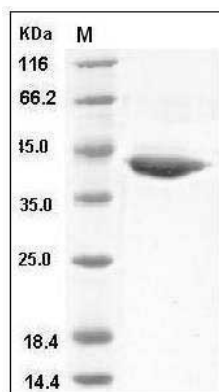
Storage

Store it under sterile conditions at -20°C to -80°C. It is recommended that the protein be aliquoted for optimal storage. Avoid repeated freeze-thaw cycles.

Reconstitution

Adding sterile water, prepare a stock solution of 0.25 mg/ml. Concentration is measured by UV-Vis.

SDS-PAGE



Human CHI3L1 / YKL40 Protein (His Tag) SDS-PAGE