

Canine GFRA1 (His Tag) recombinant protein



Catalog Number: 500831

General Information

Protein Construction

A DNA sequence encoding the canine GFRA1 (XP_852087.1) (Met1-Ser429) was expressed with a C-terminal polyhistidine tag.

Organism

Canine

Expression Host

Human Cells

QC Testing

Purity

> 95 % as determined by SDS-PAGE

Endotoxin

< 1.0 EU per μ g of the protein as determined by the LAL method

Stability

Samples are stable for up to twelve months from date of receipt at -70°C

Predicted N terminal

Asp 25

Molecular Mass

The recombinant canine GFRA1 comprises 416 amino acids and has a predicted molecular mass of 46.8 kDa. The apparent molecular mass of the

protein is approximately 54-58 kDa in SDS-PAGE under reducing conditions due to glycosylation.

Formulation

Lyophilized from sterile PBS, pH 7.4.

1. 5 % trehalose and mannitol are added as protectants before lyophilization.

2. Please contact us for any concerns or special requirements.

Usage Guide

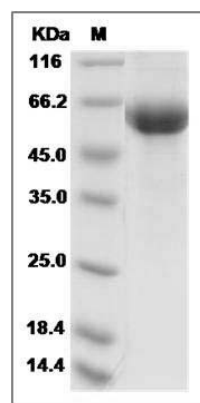
Storage

Store it under sterile conditions at -20°C to -80°C. It is recommended that the protein be aliquoted for optimal storage. Avoid repeated freeze-thaw cycles.

Reconstitution

Adding sterile water, prepare a stock solution of 0.25 mg/ml. Concentration is measured by UV-Vis.

SDS-PAGE



Canine GFRA1 / GFR alpha-1 Protein (His Tag)
SDS-PAGE