

# Mouse PSGL-1/CD162 recombinant protein



Catalog Number: 500806

## General Information

### Gene Name Synonym

Selectin P ligand

### Protein Construction

A DNA sequence encoding the extracellular domain of mouse SELPLG (Q62170) (Met1-Cys307) was expressed with six amino acids (LEVLFQ) at the C- terminus.

### Organism

Mouse

### Expression Host

Human Cells

## QC Testing

### Purity

> 85 % as determined by SDS-PAGE

### Endotoxin

< 1.0 EU per  $\mu\text{g}$  of the protein as determined by the LAL method

### Stability

Samples are stable for up to twelve months from date of receipt at  $-70^{\circ}\text{C}$

### Predicted N terminal

Leu 18

### Molecular Mass

The recombinant mouse SELPLG consists of 297 amino acids and has a calculated molecular mass of 31.2 kDa. The recombinant protein migrates as an approximately 54.9 kDa band in SDS-PAGE under reducing conditions.

### Formulation

Lyophilized from sterile PBS, pH 7.4.

1. 5 % trehalose and mannitol are added as protectants before lyophilization.
2. Please contact us for any concerns or special requirements.

## Usage Guide

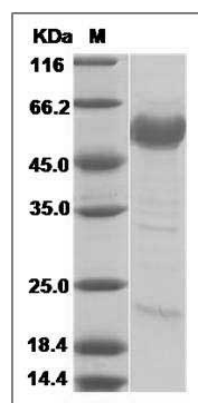
### Storage

Store it under sterile conditions at  $-20^{\circ}\text{C}$  to  $-80^{\circ}\text{C}$ . It is recommended that the protein be aliquoted for optimal storage. Avoid repeated freeze-thaw cycles.

### Reconstitution

Adding sterile water, prepare a stock solution of 0.25 mg/ml. Concentration is measured by UV-Vis.

### SDS-PAGE



Mouse PSGL-1 / CD162 / SELPLG Protein SDS-PAGE