

General Information

Gene Name Synonym

BCM1 surface antigen; BLAST-1; MRC OX-45 surface antigen; SLAM family member 2; Signaling lymphocytic activation molecule 2

Protein Construction

A DNA sequence encoding the rat CD48 (P10252) (Met1-Arg216) was expressed, fused with the Fc region of human IgG1 at the C-terminus.

Organism

Rat

Expression Host

Human Cells

QC Testing

Purity

> 95 % as determined by SDS-PAGE

Endotoxin

< 1.0 EU per μ g of the protein as determined by the LAL method

Stability

Samples are stable for up to twelve months from date of receipt at -70°C

Predicted N terminal

Phe 23

Molecular Mass

The recombinant rat CD48/Fc is a disulfide-linked

homodimer. The reduced monomer comprises 435 amino acids and has a predicted molecular mass of 49.5 kDa. The apparent molecular mass of the protein is approximately 38-44 kDa in SDS-PAGE under reducing conditions.

Formulation

Lyophilized from sterile PBS, pH 7.4

1. 5 % trehalose and mannitol are added as protectants before lyophilization.

2. Please contact us for any concerns or special requirements.

Usage Guide

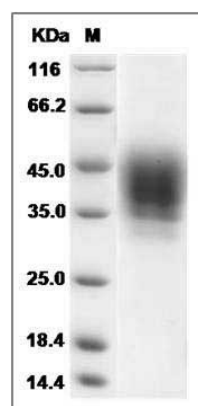
Storage

Store it under sterile conditions at -20°C to -80°C. It is recommended that the protein be aliquoted for optimal storage. Avoid repeated freeze-thaw cycles.

Reconstitution

Adding sterile water, prepare a stock solution of 0.25 mg/ml. Concentration is measured by UV-Vis.

SDS-PAGE



Rat CD48 / SLAMF2 / BCM1 Protein (Fc Tag) SDS-PAGE