

General Information

Gene Name Synonym

Actin regulatory protein CAP-G

Protein Construction

A DNA sequence encoding human CAPG(AAH14549.1) (Met1-Lys348) was expressed.

Organism

Human

Expression Host

E. coli

QC Testing

Purity

> 95 % as determined by SDS-PAGE

Endotoxin

Please contact us for more information.

Stability

Samples are stable for up to twelve months from date of receipt at -70°C

Predicted N terminal

Met

Molecular Mass

The recombinant human CAPG consists of 348

amino acids and predicts a molecular mass of 38.5 KDa. It migrates as an approximately 43 KDa band in SDS-PAGE under reducing conditions.

Formulation

Lyophilized from sterile 20mM tris, 10% glycerol, pH 8.0.

1. 5 % trehalose and mannitol are added as protectants before lyophilization.

2. Please contact us for any concerns or special requirements.

Usage Guide

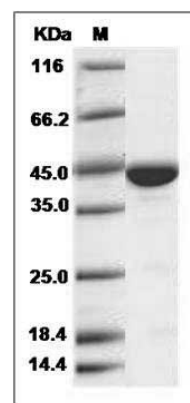
Storage

Store it under sterile conditions at -20°C to -80°C. It is recommended that the protein be aliquoted for optimal storage. Avoid repeated freeze-thaw cycles.

Reconstitution

Adding sterile water, prepare a stock solution of 0.25 mg/ml. Concentration is measured by UV-Vis.

SDS-PAGE



Human CAPG / AFCP Protein SDS-PAGE