

Human MMP-2 recombinant protein



Catalog Number: 500791

General Information

Protein Construction

A DNA sequence encoding the native human MMP2 (NP_004521.1) (Met 1-Cys 660) was expressed and purified.

Organism

Human

Expression Host

Human Cells

QC Testing

Activity

1. Measured by its ability to cleave the fluorogenic peptide substrate Mca-PLGL-Dpa-AR-NH₂ (AnaSpec, Catalog # 27076). The specific activity is > 1,000 pmoles/min/μg.
2. Measured by its binding ability in a functional ELISA.
3. Immobilized human MMP2 at 10 μg/mL (100 μl/well) can bind human TIMP2/Fc (Cat: 503112). The EC₅₀ of human TIMP2/Fc is 0.02 μg/mL.

Purity

> (74.7+17.3) % as determined by SDS-PAGE

Endotoxin

< 1.0 EU per μg of the protein as determined by the LAL method

Stability

Samples are stable for up to twelve months from date of receipt at -70°C

Predicted N terminal

Ala 30

Molecular Mass

The recombinant human MMP2 consists of 631 amino acids and migrates as an 72 kDa band as predicted in SDS-PAGE under reducing conditions.

Formulation

Lyophilized from sterile 0.05 % Brij-35, 150 mM NaCl, 5 mM CaCl₂, 50 mM Tris, pH 7.5.

1. 5 % trehalose and mannitol are added as protectants before lyophilization.

2. Please contact us for any concerns or special requirements.

Usage Guide

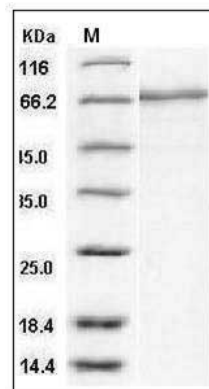
Storage

Store it under sterile conditions at -20°C to -80°C. It is recommended that the protein be aliquoted for optimal storage. Avoid repeated freeze-thaw cycles.

Reconstitution

Adding sterile water, prepare a stock solution of 0.25 mg/ml. Concentration is measured by UV-Vis.

SDS-PAGE



Human MMP-2 / CLG4A Protein SDS-PAGE