

# Human PDE2A (aa 215-900, His Tag) recombinant protein



Catalog Number: 500753

## General Information

### Gene Name Synonym

Cyclic GMP-stimulated phosphodiesterase

### Protein Construction

A DNA sequence encoding the amino acids (Glu 215-His 900) of human PDE2A (O00408-1) was fused with a polyhistidine tag at the C-terminus.

### Organism

Human

### Expression Host

Baculovirus-Insect Cells

## QC Testing

### Purity

> 90 % as determined by SDS-PAGE

### Endotoxin

< 1.0 EU per  $\mu\text{g}$  of the protein as determined by the LAL method

### Stability

Samples are stable for up to twelve months from date of receipt at  $-70^{\circ}\text{C}$

### Predicted N terminal

Ala 18

### Molecular Mass

The recombinant human PDE2A consists of 706

amino acids and predicts a molecular mass of 80.0 kDa. It migrates as an approximately 66 kDa band in SDS-PAGE in SDS-PAGE under reducing conditions.

### Formulation

Lyophilized from sterile 20mM Tris, 500mM NaCl, pH 7.4, 10% gly

- 5 % trehalose and mannitol are added as protectants before lyophilization.
- Please contact us for any concerns or special requirements.

## Usage Guide

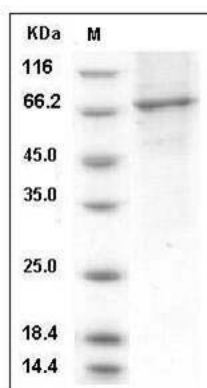
### Storage

Store it under sterile conditions at  $-20^{\circ}\text{C}$  to  $-80^{\circ}\text{C}$ . It is recommended that the protein be aliquoted for optimal storage. Avoid repeated freeze-thaw cycles.

### Reconstitution

Adding sterile water, prepare a stock solution of 0.25 mg/ml. Concentration is measured by UV-Vis.

### SDS-PAGE



Human PDE2A / CGS-PDE Protein (aa 215-900, His Tag) SDS-PAGE