

# Human MMP-26/Endometase recombinant protein



Catalog Number: 500678

## General Information

### Gene Name Synonym

Endometase; Matrilysin-2

### Protein Construction

A DNA sequence encoding the human MMP26 (NP\_068573.2) (Thr90-Pro261) was expressed and purified with an initial Met.

### Organism

Human

### Expression Host

E. coli

## QC Testing

### Activity

Measured by its ability to cleave the fluorogenic peptide substrate, Mca-Pro-Leu-Gly-Leu-Dpa-Ala-Arg-NH<sub>2</sub>.

The specific activity is > 60 pmol/min/μg.

### Purity

> 90 % as determined by SDS-PAGE

### Endotoxin

Please contact us for more information.

### Stability

Samples are stable for up to twelve months from date of receipt at -70°C

### Predicted N terminal

His

## Molecular Mass

The recombinant human MMP26 consists of 173 amino acids and predicts a molecular mass of 19.6 kDa. It migrates as an approximately 19 kDa band in SDS-PAGE under reducing conditions.

## Formulation

Lyophilized from sterile 50 mM Tris, 2 mM CaCl<sub>2</sub>, pH 7.8.

1. 5 % trehalose and mannitol are added as protectants before lyophilization.
2. Please contact us for any concerns or special requirements.

## Usage Guide

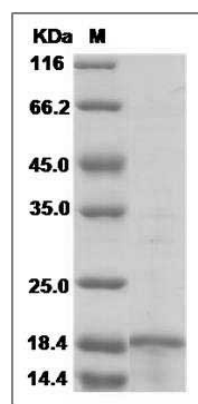
### Storage

Store it under sterile conditions at -20°C to -80°C. It is recommended that the protein be aliquoted for optimal storage. Avoid repeated freeze-thaw cycles.

### Reconstitution

Adding sterile water, prepare a stock solution of 0.25 mg/ml. Concentration is measured by UV-Vis.

## SDS-PAGE



Human MMP-26 / Matrix metalloproteinase-26 Protein SDS-PAGE