

Human ENO1 / Enolase 1 / alpha-enolase (His Tag) recombinant protein



Catalog Number: 500637

General Information

Gene Name Synonym

2-phospho-D-glycerate hydro-lyase; C-myc promoter-binding protein; Enolase 1; MBP-1; MPB-1; Non-neural enolase; Phosphopyruvate hydratase; Plasminogen-binding protein

Protein Construction

A DNA sequence encoding the human ENO1 (P06733-1) (Met 1-Lys 434) was expressed, with a polyhistidine tag at the N-terminus.

Organism

Human

Expression Host

E. coli

QC Testing

Purity

> 95 % as determined by SDS-PAGE

Endotoxin

Please contact us for more information.

Stability

Samples are stable for up to twelve months from date of receipt at -70°C

Predicted N terminal

Met

Molecular Mass

The recombinant human ENO1 consisting of 450 amino acids and has a calculated molecular mass of 49.3 kDa. It migrates as an 47 kDa band in SDS-PAGE under reducing conditions as predicted.

Formulation

Lyophilized from sterile 20mM Tris, 10% glycerol, pH 8.5

1. 5 % trehalose and mannitol are added as protectants before lyophilization.
2. Please contact us for any concerns or special requirements.

Usage Guide

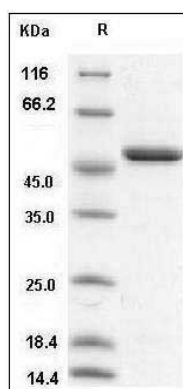
Storage

Store it under sterile conditions at -20°C to -80°C. It is recommended that the protein be aliquoted for optimal storage. Avoid repeated freeze-thaw cycles.

Reconstitution

Adding sterile water, prepare a stock solution of 0.25 mg/ml. Concentration is measured by UV-Vis.

SDS-PAGE



Human ENO1 / Enolase 1 / alpha-enolase Protein (His Tag) SDS-PAGE