

# Human LAP3 (His Tag) recombinant protein



Catalog Number: 500619

## General Information

### Gene Name Synonym

Leucine aminopeptidase 3; Leucyl aminopeptidase; Peptidase S; Proline aminopeptidase; Prolyl aminopeptidase

### Protein Construction

A DNA sequence encoding the human LAP3 (NP\_056991.2) (Met1-Ala519) was expressed with a polyhistidine tag at the C-terminus.

### Organism

Human

### Expression Host

Human Cells

## QC Testing

### Purity

> 90 % as determined by SDS-PAGE.

### Endotoxin

< 1.0 EU per  $\mu$ g protein as determined by the LAL method.

### Stability

Samples are stable for up to twelve months from date of receipt at -70°C

### Predicted N terminal

Met

### Molecular Mass

The recombinant human LAP3 consists 530 amino acids and predicts a molecular mass of 57.6 kDa.

### Formulation

Lyophilized from sterile 20 mM Tris, 500 mM NaCl, 20 % glycerol, pH 7.4.

1. 5 % trehalose and mannitol are added as protectants before lyophilization.
2. Please contact us for any concerns or special requirements.

## Usage Guide

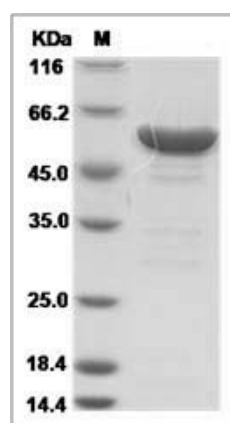
### Storage

Store it under sterile conditions at -20°C to -80°C. It is recommended that the protein be aliquoted for optimal storage. Avoid repeated freeze-thaw cycles.

### Reconstitution

Adding sterile water, prepare a stock solution of 0.25 mg/ml. Concentration is measured by UV-Vis.

### SDS-PAGE



Human LAP3 Protein (His Tag)