

# Mouse GFRA1 (His Tag) recombinant protein



Catalog Number: 500602

## General Information

### Gene Name Synonym

TGF-beta-related neurotrophic factor receptor 1

### Protein Construction

A DNA sequence encoding the extracellular domain (Met 1-Ser 425) of mouse GFR $\beta$ 1 isoform beta (AAB86600.1) was expressed with a C-terminal polyhistidine tag.

### Organism

Mouse

### Expression Host

Human Cells

## QC Testing

### Activity

1. Measured in a cell proliferation assay using SH-SY5Y human neuroblastoma cells. The ED<sub>50</sub> for this effect is typically 0.3-1.5  $\mu$ g/mL in the presence of 40 ng/mL Recombinant Human GDNF.
2. Measured by its ability to bind with human GDNF (Cat:500168) in a functional ELISA.

### Purity

> 98 % as determined by SDS-PAGE

### Endotoxin

< 1.0 EU per  $\mu$ g of the protein as determined by the LAL method

### Stability

Samples are stable for up to twelve months from date of receipt at -70°C

### Predicted N terminal

Asp 25

## Molecular Mass

The secreted recombinant mouse GFR $\beta$ 1 consists of 412 amino acids and has a calculated molecular mass of 46.3 kDa. As a result of glycosylation, the recombinant protein migrates as an approximately 55-60 kDa protein in SDS-PAGE under reducing conditions.

## Formulation

Lyophilized from sterile PBS, pH 7.4

1. 5 % trehalose and mannitol are added as protectants before lyophilization.
2. Please contact us for any concerns or special requirements.

## Usage Guide

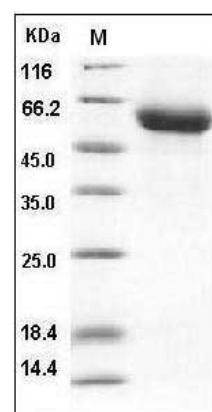
### Storage

Store it under sterile conditions at -20°C to -80°C. It is recommended that the protein be aliquoted for optimal storage. Avoid repeated freeze-thaw cycles.

## Reconstitution

Adding sterile water, prepare a stock solution of 0.25 mg/ml. Concentration is measured by UV-Vis.

## SDS-PAGE



Mouse GFRA1 / GFR alpha-1 Protein (His Tag)  
SDS-PAGE